

311 6th Street
Building Spec
Scale: 1/8" = 1'-0"

Interior - 2000 sqft
Exterior - 1300 sqft

Washer & Dryer
Connections or
Storage/Helving

Full Kitchen
- Oven/Range
- Microwave
- Fridge/Freezer

Parking and Patio
1300 sqft

1st floor
1600 sqft

Loft Space
(above)
400 sqft

Gated Private Parking
2 spaces

Private Patio

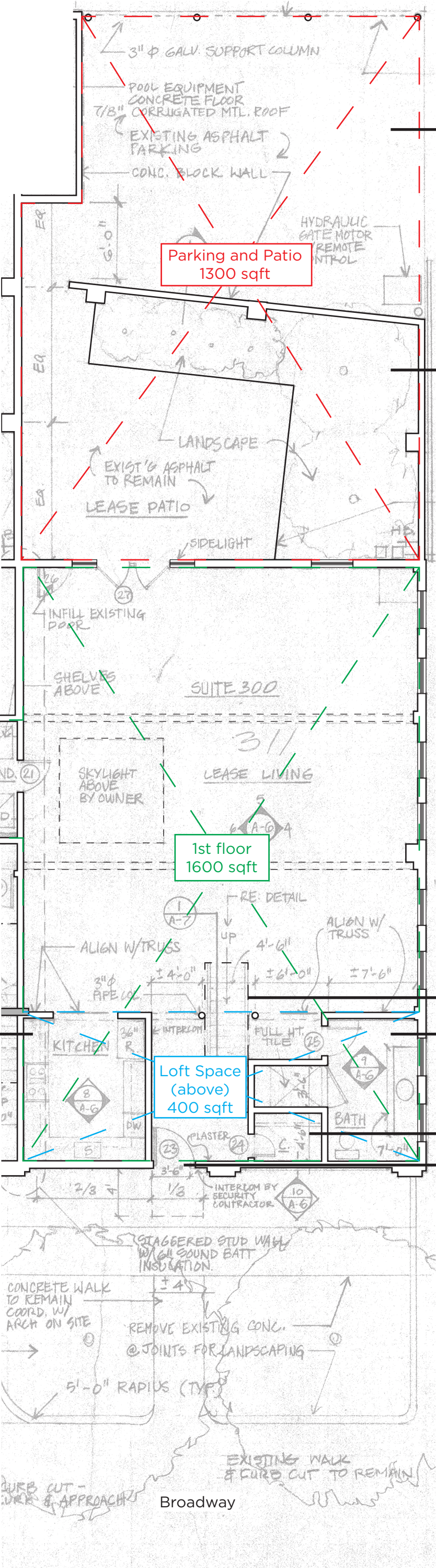
Alley

Loft Space Above

Bathroom with shower

Walk-in Storage Closet

Entry with security system



Broadway